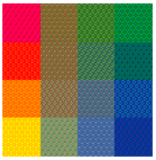


# Polaroid PDC-2000

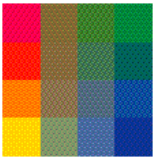
## DIGITAL CAMERA



professional quality digital pictures  
with fully automated convenience



# Polaroid PDC-2000



## What is a digital camera?

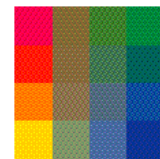
A digital camera captures images through a lens, much like any conventional camera.

However, unlike conventional cameras, which store their images on film, a digital camera stores the image electronically in either the camera's internal memory or in the memory available on a host computer connected to the camera.

## Why use a digital camera?

The **advantage** of a digital camera is that the images are available in an electronic format **immediately**, rather than having to be processed and then scanned, as with conventional imaging.

# Polaroid PDC-2000



## Three models

- **PDC-2000/40**

- stores 40 images
- (PID # 620769)                      \$3,695

- **PDC-2000/60**

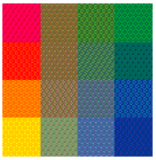
- stores 60 images
- (PID # 620770)                      \$4,995

- **PDC-2000/T**

- no internal storage  
(camera connected to computer;  
images stored on hard disk)
- (PID # 620771)                      \$2,995

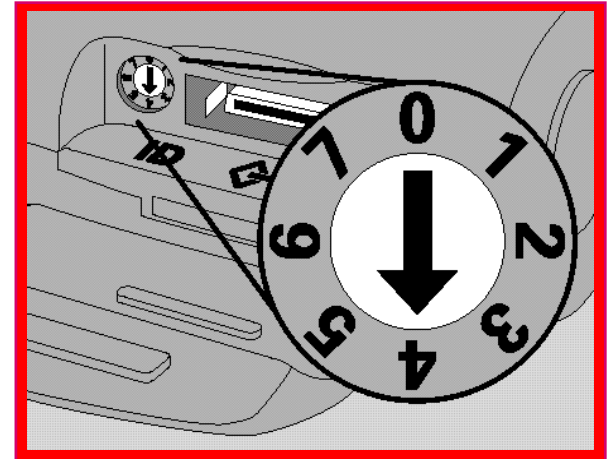
- **note: all prices US list; international prices vary**

# Polaroid PDC-2000

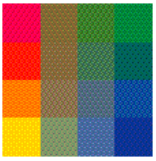


## Features & Benefits

- **Polaroid Proprietary Megapixel CCD**
  - real-time image capture / full, vibrant colors
- **Sonar Auto Focus**
  - provides precise focusing
- **Interchangeable Lenses**
  - provide creative flexibility
- **SCSI connection to host computer**
  - provides high speed transfer of images



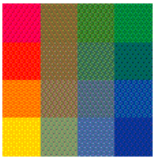
# Polaroid PDC-2000



## Features & Benefits

- **Exposure Controls**
  - flash, white balance and backlight compensation
  - produces correctly exposed images in a variety of lighting conditions
- **LCD Status Panel**
  - time & date, picture number, light settings, etc.
  - provides camera settings and operation information
- **Picture Labeling System**
  - permits easy linkage of images with other documents; aids in image recall

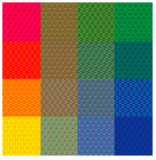
# Polaroid PDC-2000



## Applications

- **desktop publishing**
  - capture images for brochures, newsletters or catalogs
- **security and identification**
  - maintain a computerized photo catalog of employees
- **law enforcement**
  - transfer downloaded images to computers in remote sites
- **multimedia programs / world wide web development**
  - provide images for your CD-ROM or homepage

# Polaroid PDC-2000



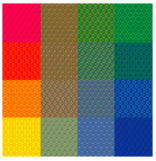
## Dealers

- authorized Polaroid re-sellers
- computer product dealers
- photographic product dealers

## Warranty

the PDC-2000 comes with a 12-month warranty and Polaroid's "Total Satisfaction Guarantee," allowing any product to be returned within 30 days.

# Polaroid PDC-2000

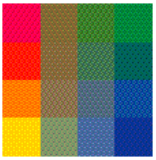


## Specifications

- **sensor:**
  - Polaroid proprietary 1 million pixel CCD
- **output resolution:**
  - high resolution: 800x600 pixels, 24-bit color (16.7 million colors), 1.4MB file will produce 4"x3" print @ 200 dpi
  - super high resolution: 1600x1200 pixels, 24-bit color (16.7 million colors), 5.6 MB file will produce 8"x6" print @ 200 dpi
- **ISO rating:**
  - 100 (film speed equivalent)



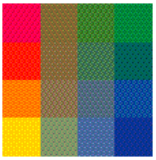
# Polaroid PDC-2000



## Specifications

- **lens:**
  - standard: 11mm (38mm equivalent) f/2.8 glass
  - optional: 17mm (60mm-equivalent) f/2.8 glass
- **focus range:**
  - standard lens: 10 inches (26cm) - infinity
  - optional lens: 24 inches (61cm) - infinity
- **shutter speed:**
  - 1/25 to 1/500 second
- **aperture:**
  - f/2.8 to f/11

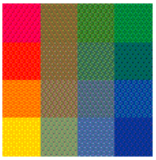
# Polaroid PDC-2000



## Specifications

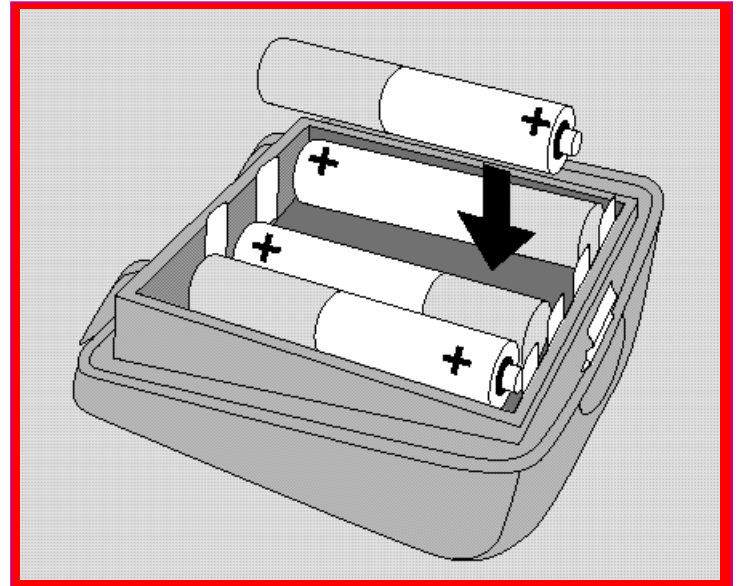
- **flash:**
  - internal maximum range: 15 feet (4.6m)
- **exposure controls:**
  - flash, white balance, backlight compensation
- **image processing: internal:**
  - real-time color recovery and geometric correction
- **digital interface:**
  - SCSI II connector on camera connects to host PCMCIA port w/optional SCSI adapter
- **viewfinder:**
  - optical in stand-alone mode

# Polaroid PDC-2000

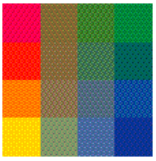


## Power Supply

- Four rechargeable “AA” NiCad batteries
- IEC universal power adapter/trickle charger
  - source:
    - 100 to 240 VAC, 50 to 60 Hz
  - consumption:
    - less than 45 W
  - operating voltage:
    - 5V



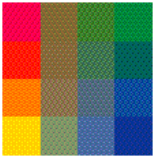
# System Requirements



## Windows/IBM PC or compatible

- 486 or later processor running at 33Mhz or faster (Pentium recommended)
- MS-DOS 5.0 or higher
- Windows 3.1, 3.11, Windows 95
- 8 MB of available RAM (16 MB recommended)
- 10 MB of available hard disk space
- ASPI-compliant SCSI adapter card
- Video adapter and monitor capable of displaying 24-bit color (16.7 million colors) recommended

# System Requirements

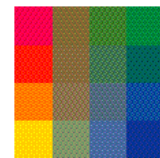


## Macintosh

- Macintosh, Powerbook or Power Macintosh computer with 68030 or later processor
- MacOS System Software version 7.1 or later
- 8 MB of available RAM (16 MB recommended)
- 10 MB of available hard disk space

# Software

## Macintosh



- **PDC- 2000 Plug-in**

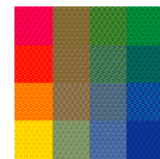
- acquire images into image editing software (Photoshop compatible)
- transfer, edit, manipulate, “save as”

- **PDC- 2000 Direct**

- view & transfer pictures from the camera to the computer
- change internal settings
- operate the camera from the computer (use monitor as viewfinder)

# Software

## Windows

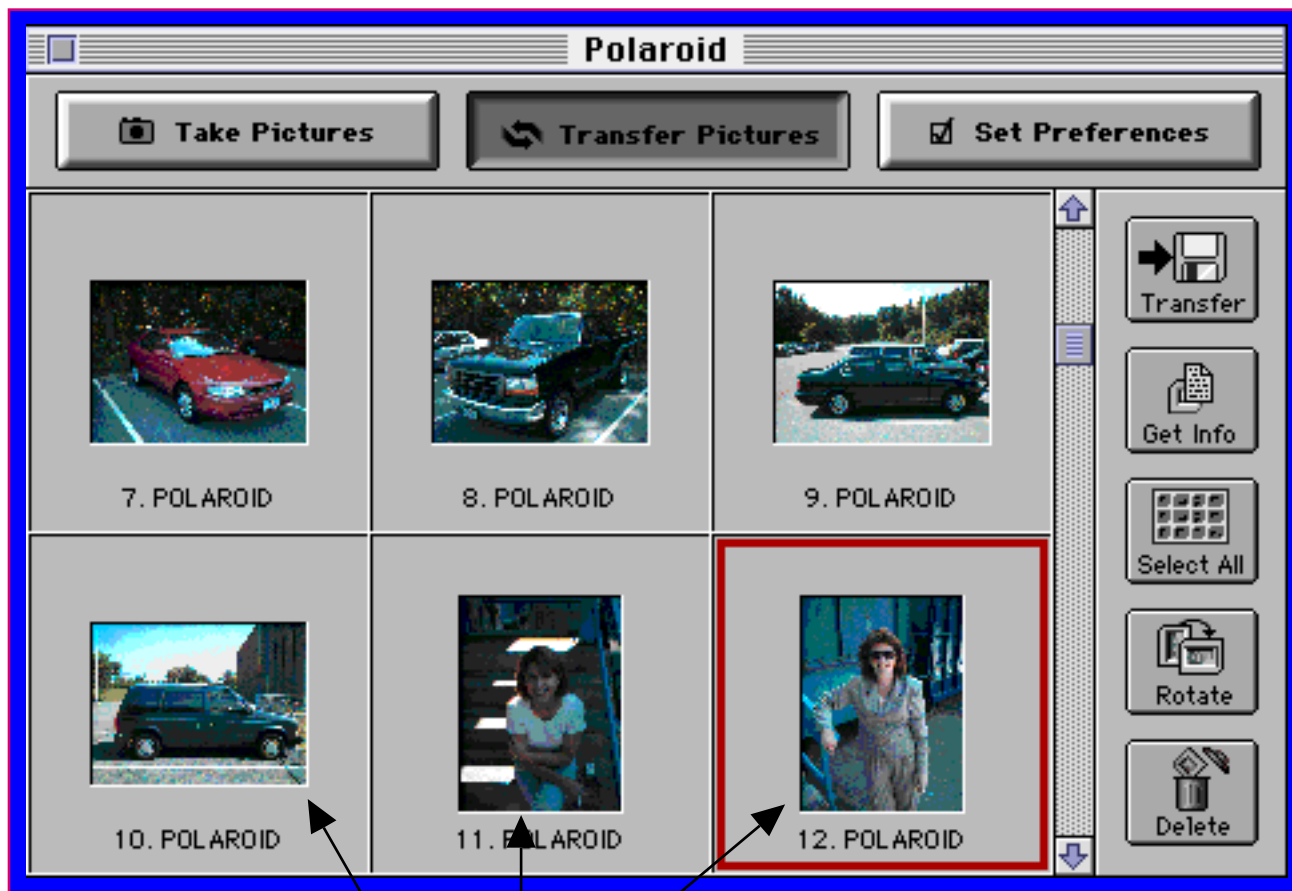
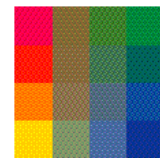


- **PDC-2000 Direct and Plug-in Windows software have same application as Mac versions.**
- TWAIN Driver should be loaded in place of the Acquire Plug-in if the software application does not accept Photoshop plug-ins.

# Software Preview

PDC-2000 Direct

• Transfer Pictures Window



Click buttons to:

- transfer
- get info
- select all
- rotate
- delete

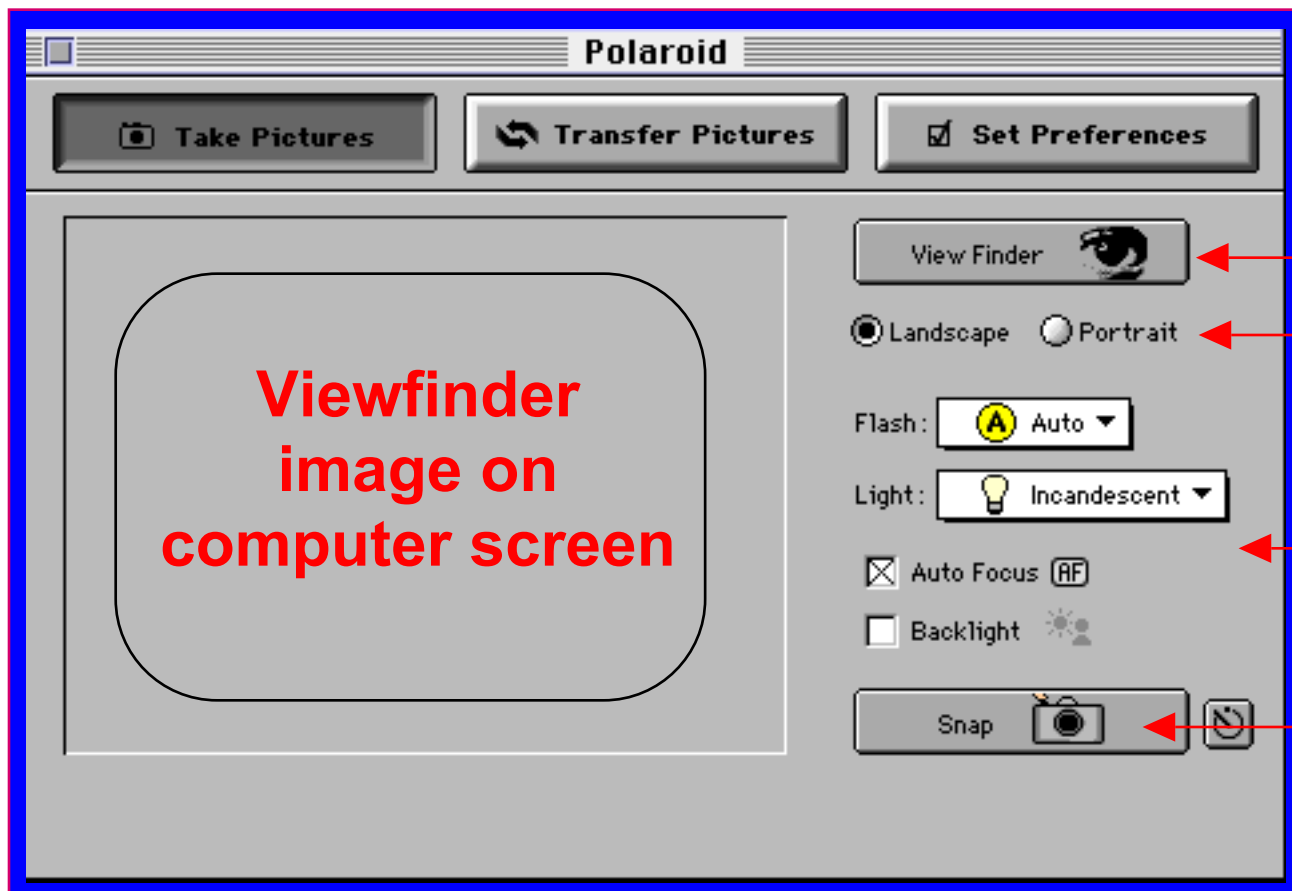
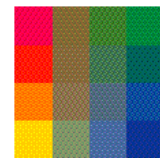
Thumbnails of images in camera



# Software Preview

PDC-2000 Direct

- Take Pictures Window



**Viewfinder  
image on  
computer screen**

**Activate  
viewfinder**

**Change  
orientation**

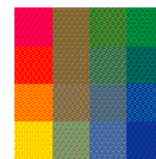
**Change  
settings**

**Take &  
transfer  
image**

# Software Preview



## PDC-2000 Direct

- Set Preferences Window



**Polaroid**

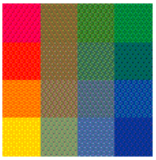
Take Pictures    Transfer Pictures     Set Preferences

|  |  |
|--|--|
| <b>Camera</b><br>Name: <input type="text" value="RETEK"/> <input type="button" value="Set..."/><br>Label: <input type="text" value="POLAROID"/> <input type="button" value="Set..."/>        | <b>Timeouts</b><br>Viewfinder: <input type="text" value="10"/> <input type="button" value="↑"/> <input type="button" value="↓"/> seconds<br>Camera Power-off: <input type="text" value="2"/> <input type="button" value="↑"/> <input type="button" value="↓"/> minutes                         |
| <b>Date &amp; Time</b><br>Camera: <input type="text" value="8/14/96 9:46:43 AM"/><br>Computer: <input type="text" value="8/14/96 9:47:02 AM"/><br><input type="button" value="Synchronize"/> | <b>Image</b><br><input checked="" type="radio"/> High Resolution (800x600)<br><input type="radio"/> Super High Resolution (1600x1200)  |
| <b>Battery Level</b><br> 1/2   | <b>Other</b><br><input type="button" value="Release Camera..."/> <input checked="" type="checkbox"/> Sound <br><input type="button" value="Expert Preferences..."/> <input type="button" value="About..."/> |

### Preferences:

- User name
- Label
- Date & time
- Timeouts
- Resolution
- Sound
- Release camera

# Supplied Accessories



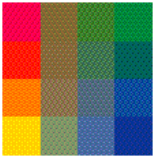
- **SCSI cable**
  - connects camera to computer for image transfer & storage
    - PID# 620853
- **neck and hand straps**
  - provide greater security, prevent accidents
    - PID # 620851 (neck strap)
    - PID # 620852 (hand strap)
- **4-pack rechargeable AA NiCad batteries; rapid battery charger**
  - provide field operation power supply
    - PID # 620861 (4-pack AA NiCad batteries)
- **IEC power adapter & trickle charge power cord**
  - provides universal power charge
    - PID # 620855 (power adapter)
    - PID # 620856 (trickle charge power cord)

# Optional Accessories



- **17 mm lens (60mm equivalent)  
f/2.8 w/focus range 24 inches-infinity**
  - provides added creative flexibility
    - PID# 620857
- **slim SCSI card: PCMCIA-to-SCSI**
  - provides connection to PC notebook computers
    - PID # 623737
- **2-meter SCSI system cable**
  - provides extra connection length for convenience
- **SCSI host adapter**
  - adds a SCSI port to IBM compatibles
    - PID # 621050
- **12-volt car adapter and recharger**
  - provide additional power options
    - PID # 620859
- **110-volt rapid battery charger**
  - fully charges NiCad batteries in 5 hours
    - PID # 620860
- **Soft camera bag with shoulder strap**
  - provides increased protection
    - PID # 613218

# Polaroid PDC-2000

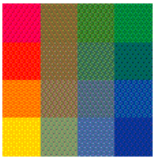


## Technical Support

- **Telephone:**
  - 800 / 432 - 5355  
Mon - Fri, 8AM - 8PM (Eastern time)
  - Fax: 781 / 386 - 9688
- **Online:**
  - <http://www.polaroid.com>
  - CompuServe: "GO Polaroid"
- **Write:**
  - Polaroid Electronic Imaging Technical Support
  - 565-3B Technology Square
  - Cambridge, MA 02139



## Common Questions



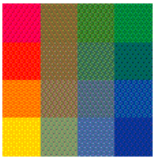
### What is a digital camera?

A digital camera takes pictures just like a conventional camera, but rather than storing the images on film, it stores them electronically.

Depending on the model purchased, the pictures are stored first in the camera and later transferred to a computer, or the images may be stored on a computer connected to the camera as the pictures are taken.



## Common Questions

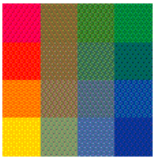


### Who uses a digital camera and why?

Graphic designers, photographers, desktop publishing and print production professionals are typical users of a digital camera. It allows them to capture, edit, import, manipulate and transmit images immediately without going through the time-consuming steps of film processing, printing and scanning.



## Common Questions



### How long does it take to transfer a picture from the camera to my computer?

The PDC-2000 uses the high speed SCSI-2 standard interface to connect to Macintosh or IBM compatible computers.

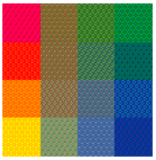
The image transfer speed will vary according to the computer receiving the files.

One high resolution image will transfer to a 120 MHz Macintosh Power PC in 9 seconds. The super high resolution image requires 19 seconds.





## Common Questions

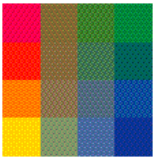


**Can I put the lenses from my other cameras onto the PDC-2000 camera?**

The supplied PDC-2000 lens (38mm equivalent) is interchangeable only with the optional 60mm-equivalent lens, available from Polaroid.



## Common Questions



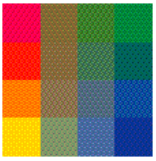
### Which file format is used to store images?

When you save the images directly to your computer's hard drive, the pictures are saved as TIFF files.

Most image-processing programs, such as Photoshop, allow you to choose a file format (TIFF, PIC, PCX, GIF, JPEG, etc.) for the pictures you save.



## Common Questions



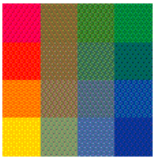
### **How long will the batteries power the camera before I have to recharge them?**

You can take about 40 pictures, under normal conditions, before having to recharge the batteries.

With the PDC-2000 connected to the AC Adapter you may continue to operate the camera as the batteries are recharging.



## Common Questions



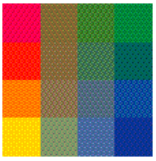
### **Can I use the camera without Photoshop or some other image processing software on my PC?**

Yes, the PDC-2000 Direct software that comes with the camera allows you to...

- view the pictures stored in the camera,
- transfer images to your computer, saving them as TIFF files on your hard drive, and
- operate the camera through the computer, using your monitor as a viewfinder.



## Common Questions



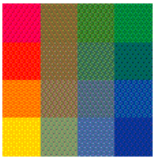
### **Can I shoot pictures in rapid succession with the PDC-2000?**

Without the flash, it takes 7 seconds before the camera is ready to take another shot.

If you're using the flash, it will take 12 seconds between shots.



## Common Questions



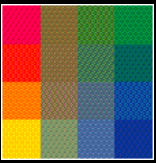
**If I print an image taken with the PDC-2000,  
how big will it be?**

The linear dimensions of any image are controlled by the image processing software.

The unmanipulated super high resolution images files (1600x1200 pixels) will produce an excellent quality 200 DPI 8"x6" print.

The high resolution image files (800x600 pixels) will produce a 4"x3" print at 200 DPI.

Polaroid Digital Camera  
PDC-2000



Capture  
high-quality  
color images